



Translation of the Movianto publication issued in LOGISTIK HEUTE, 9/2008

Cool chain in real time

In the central European warehouse of CSL Behring an uninterrupted cold chain ensures a good flow of blood plasma products.

Strict regulations apply to an increasing number of pharmaceutical and healthcare products with regard to maintaining specified temperature ranges during storage and transport. Vaccines and other sensitive medicines may not exceed a temperature range below 2 °C or above 8 °C – from the production until they are delivered to the pharmacist or patient. This guideline issued by the EU passes responsibility on to logistics service provider in particular: they have to ensure that the cold chain is maintained during storage and transport without interruption – despite a flexible response to demand and delivery to wholesalers, pharmacists and hospitals to meet their needs within 24 hours.

The demand for cold chain logistics is growing continuously. This was the reason of the expansion in capacity of the specialist provider of services for the healthcare and biotechnology industry Movianto GmbH of Stuttgart at the end of last year, which added around 2,000 cold storage places to the Neunkirchen warehouse for CSL Behring GmbH, Hattersheim am Main. The globally active manufacturer of plasma derivatives stores blood plasma products which require permanent temperature control there.

Monitoring around the clock

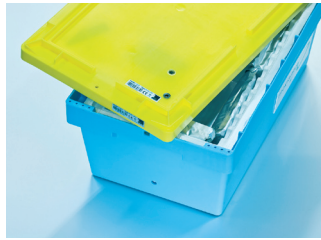
The new distribution centre guarantees constant cooling between two and eight degrees Celsius with around-the-clock monitoring and also functions for CSL Behring as a central European storage facility. Movianto also takes over all the tasks along the supply chain: from cold chain storage to pick & pack and despatch, through to product-specific cold chain transport to pharmacists and hospitals in Germany, Austria and Denmark. Additional other warehouses within Europe, which serves the customers directly, are also supplied. In this way a uniform European solution is offered, and CSL Behring does not have to co-ordinate different service-providers.

For short transport routes, in particular for “same day delivery”, Movianto relies on passive refrigeration. Validated cooling boxes are used which maintain the desired temperature using refrigeration units and a particular form of insulation for the container. The containers are equipped with temperature recorders, or alternatively a special sensor is inserted. This is then integrated into the lid of the cooling box with a GSM module and a trigger mechanism for monitoring opening of the boxes. As well as temperature, air humidity and location are recorded. Because the signals are transmitted continuously to a logistics server, the status of the product can be called up in real time via a web-based interface. This continuous data transmission guarantees that responsibilities can be clearly allocated at any time: measurement of the incidence of light when the cooling box is opened by the recipient documents, for instance, the point in time at which liability transfers.

For onward journeys, transport takes place using validated refrigerated vehicles. This active refrigeration is always used if customers are being supplied throughout Europe from the central warehouse in Neunkirchen. The refrigerated vehicles are delivery vans with constant temperature measurement and control.

Complete documentation possible

For manufacturer it is important that a complete documentation is possible. In this respect a reliable IT connection between the logistics service-provider and the pharmaceutical manufacturer is an important pre-condition for smooth collaboration. CSL Behring is therefore connected to the central Movianto Prince IT platform. This guarantees permanently transparent, validated processes, from receipt of order through to invoicing. →



Translation of the Movianto publication issued in LOGISTIK HEUTE, 9/2008

This tool carries out translation and transmission of data to all Movianto branches, ensuring that no separate interfaces are necessary. It also ensures that high transparency is guaranteed along the whole supply chain, as relevant data such as warehouse stocks can be called up in real time via standard interfaces and reports.

Complete documentation also includes permanent monitoring to ensure that specified temperatures are maintained. Movianto makes this possible by using GSM data recording systems in the refrigerated vehicles or by sensors in the cooling boxes. Ensuring that all processes are fully understandable is particularly important in the sensitive area of cold chain logistics for pharmaceuticals. The slightest irregularity can lead that medicines – and therefore whole treatments – are losing their effectiveness. p./Doris Herrmann

© 2009 All rights reserved.
Reproduction on data media of all types is prohibited.
HUSS-VERLAG GmbH
Joseph-Dollinger-Bogen 5
80912 Munich
Tel. +49(0)89 3 23 91-0
Fax +49(0)89 3 23 91-416
www.logistik-heute.de